



Mike DeWine, Governor | Jim Tressel, Lt. Governor | Matt Damschroder, Director

FOR IMMEDIATE RELEASE

July 18, 2025

MEDIA CONTACTS:

Tom Betti: 614-728-9645

Thomas.Betti@jfs.ohio.gov

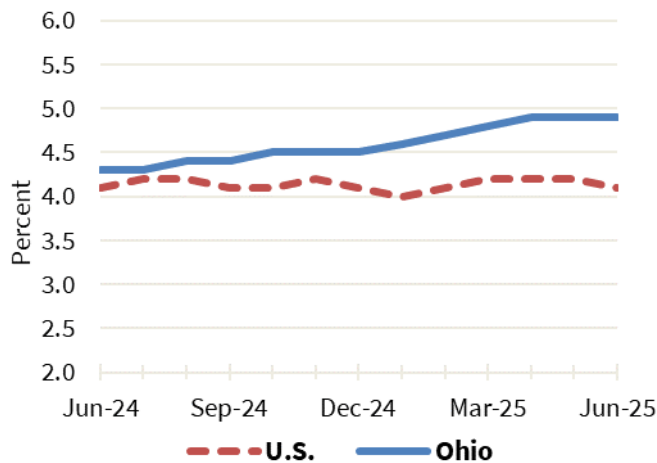
Bill Teets: 614-403-2331

Bill.Teets@jfs.ohio.gov

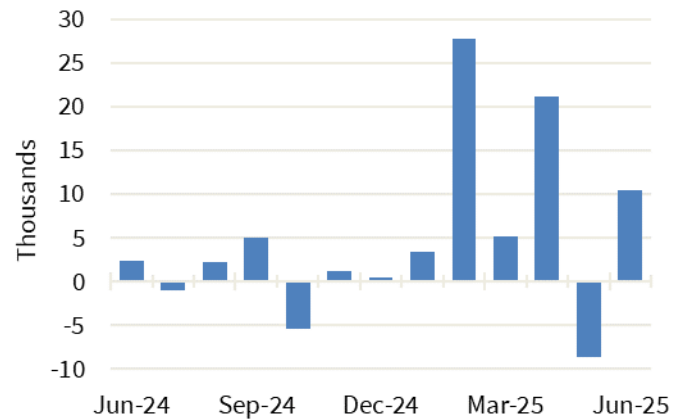
Ohio's Unemployment Rate was 4.9% in June, Unchanged from May

Ohio's unemployment rate was 4.9% in June 2025, unchanged from 4.9% in May 2025. Ohio's nonagricultural wage and salary employment increased 10,400 over the month, from a revised 5,703,500 in May to 5,713,900 in June.

**Ohio and U.S. Unemployment Rates,
seasonally adjusted, June 2024 – June 2025**



**Ohio Nonfarm Payroll Employment Over-the-Month Change,
seasonally adjusted, June 2024 – June 2025**



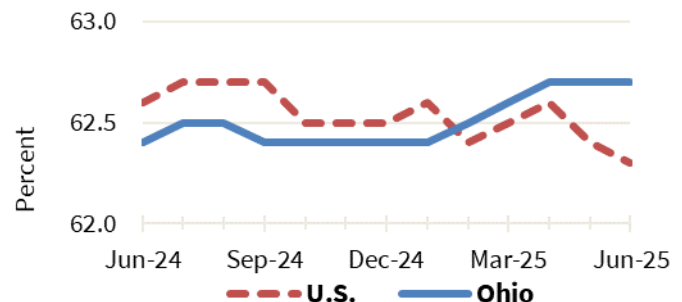
Household Survey Data

The number of workers unemployed in Ohio in June was 293,000, down from 294,000 in May 2025. The number of unemployed has increased by 41,000 in the past 12 months from 252,000. The June unemployment rate for Ohio increased 0.6 percentage points from 4.3% in June 2024.

The U.S. unemployment rate for June 2025 was 4.1%, down from 4.2% in May 2025 and unchanged from 4.1% in June 2024.

In June 2025, the labor force participation rate in Ohio was 62.7%, unchanged from 62.7% in May 2025 and up from 62.4% in June 2024. During the same period, the national labor force participation rate was 62.3%, down from 62.4% in May 2025 and down from 62.6% in June 2024.

**Ohio and U.S. Labor Force Participation Rates,
seasonally adjusted, June 2024 – June 2025**



Establishment Survey Data

Ohio's nonagricultural wage and salary employment increased 10,400 over the month, from a revised 5,703,500 in May to 5,713,900 in June, according to the latest business establishment survey conducted by the U.S. Department of Labor (Bureau of Labor Statistics) in cooperation with the Ohio Department of Job and Family Services (ODJFS).

Employment in goods-producing industries, at 961,800, increased 2,100 over the month in manufacturing (+1,500) and construction (+600). Mining and logging did not change over the month. The private service-providing sector, at 3,963,300, increased 9,500 as gains in trade, transportation, and utilities (+3,500); professional and business services (+3,200); leisure and hospitality (+2,900); and private educational and health services (+1,700) surpassed losses in information (-1,100) and other services (-700). Employment in financial activities did not change over the month. Government employment, at 788,800, decreased 1,200 in state (-900) and federal (-300) government. Local government employment did not change.

From June 2024 to June 2025, nonagricultural wage and salary employment increased 61,600. Employment in goods-producing industries increased 20,100, led by construction, which added 17,700 jobs. Manufacturing added 2,800 jobs, as gains in nondurable goods (+3,300) outpaced losses in durable goods (-500). Mining and logging lost 400 jobs over the year. Employment in the private service-providing sector increased 43,600 in private educational and health services (+21,500); professional and business services (+7,300); leisure and hospitality (+6,800); financial activities (+4,300); other services (+1,700); trade, transportation, and utilities (+1,000); and information (+1,000). Government employment decreased 2,100, over the year, as losses in federal (-1,600) and local (-1,100) government outweighed gains in state government (+600).

EDITOR'S NOTE: All data cited are produced in cooperation with the U.S. Department of Labor. Data sources include the Current Population Survey (U.S. data), Current Employment Statistics Program (nonagricultural wage and salary employment data), and Local Area Unemployment Statistics Program (Ohio unemployment rates). More complete listings of the data appear in the monthly Ohio Labor Market Review. Unemployment rates for all Ohio counties, as well as cities with populations of 25,000 or more, are presented in the monthly ODJFS Civilian Labor Force Estimates publication. Updated statewide historical data can be obtained through the OhioLMI app, which is available for free on mobile devices through the App Store or Google Play. Ohioans can access tens of thousands of job openings, for positions ranging from file clerks to CEOs, at <https://ohiomeansjobs.ohio.gov>.

News Release Dates

A calendar of 2025 release dates is available online at <https://ohiolmi.com/Home/Events>.

County, city, and metropolitan area unemployment rates for June 2025 will be posted online at <https://ohiolmi.com> on Tuesday, July 22, 2025. July 2025 unemployment rates and nonagricultural wage and salary data for Ohio will be released by ODJFS on Friday, August 15, 2025. This information and the monthly statistical summaries it is based on are also available at <https://jfs.ohio.gov/about/communications>.

Choose this link to view the table on the [Ohio and U.S. Employment Situation](#).

Choose this link to view the table for the [Nonagricultural Wage and Salary Employment Estimates for Ohio](#).

-30-

The Ohio Department of Job and Family Services manages vital programs that strengthen Ohio families. These include job training and employment services, unemployment insurance, cash and food assistance, adult protective services, and child support services.

